



"Niagara Rhodo"



Newsletter - The Niagara Region Chapter,
Rhododendron Society of Canada
District 12, American Rhododendron Society
April 6, 2014 Annual Plant Sale Discussion

Our Purpose: We are a non-profit organization whose aim is to promote, encourage and support interest in the genus *rhododendron*.. Our goal is to encourage gardeners to grow and appreciate these plants, by providing educational meetings with knowledgeable speakers, access to topical publications and hosting joint meetings with other chapters.

Inside This Issue:

1. Steven Krebs on March 2, 2014
2. Kevin Kavanagh –Winter of 2013-2014: What our plants are telling. Implications for gardeners.
3. Slideshow, Description & Discussion of varieties & Plants for sale on April 26, 2014

Word of Caution

By becoming a successful grower, the reader will be exposed to a contagion for which there is no cure. Once infected with an appreciation of rhododendrons and azaleas most gardeners spend a lifetime collecting these most beautiful of all plants.

H. Edward Reiley

Sunday, April 6 2014, 2 P.M.
Vineland Research & Innovation Centre
Victoria Avenue, Vineland Station

Kevin Kavanagh
"South Coast Gardens, St. Williams, Ontario"
Landscape Designer, Conservation Biologist



Two Part Program

Part 1 (Kevin Kavanagh)
The Winter of 2013-2014: What our plants are telling us. Implications for all gardeners.

Part 2 (Plant Committee)
Description, slide show & discussion of cultivars available at the Annual Plant Sale.

Part 1 – The Winter of 2013-2014: What our plants are telling us! Implications for all gardeners.

This winter has reversed a trend of several years of warming winter temperatures. During this time many professional growers and home gardeners have come to expect blooms in late March or early April and have started to talk about Horticultural Zone changes and to experiment with growing plants that most would consider inconsistent with the local horticultural zone. These ideas were suddenly brought into question when freezing temperatures arrived in late November, 2013, and stayed at that and colder levels into late March when overnight temperatures hovered around -5C in late March in Niagara Region.

Kevin Kavanagh will briefly review this winter's weather experiences in southern Ontario, report on what commercial growers' experienced and provide informed advice on how to deal with the effects of this winter's rampage.

Part 2 – Cultivars Available at the Annual Rhododendron Sale

Following Kevin's talk there will be a slideshow describing cultivars to be available at the plant sale. As usual, attempts will be made to provide information about cultivars' strengths and weakness, their expected performance and suggestions for planting and care.

Again this year, the popular **Pre-Order Program** will be in effect. Members in good standing as of April 6, 2014 are invited to place their orders before April 19, 2014. Plants will be available for pick-up at 9 A.M. on the day of sale. Photos of most cultivars to be offered at the plant sale on Saturday, April 26, 2014 and a pre-order form part of this Newsletter.

Steve Krebs at the Meeting of March 2, 2014

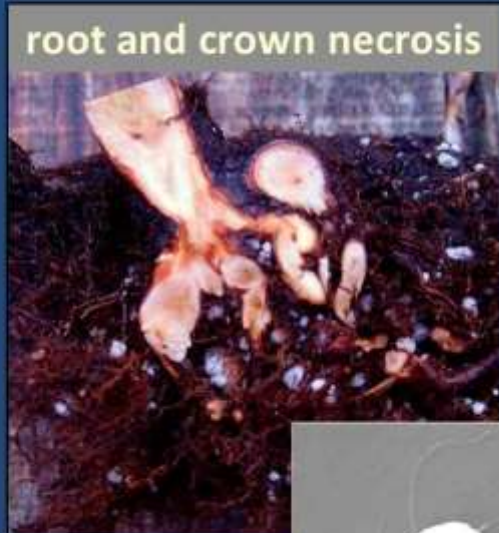
Forty-four gardeners braved Niagara's snow to hear Steve Krebs, Director of the Leach Research Station at Holden Arboretum in Kirtland, Ohio. As president of the Great Lakes Chapter of the ARS he provided a colourful description of the Annual [Convention](#) to be held at PAINESVILLE, OHIO, May 15 to 18, 2014. His presentation included in depth information about gardens to be visited and exciting new developments at the Holden Arboretum. He concluded with a thorough discussion of the most recent results from his research on resistance to Phythophthera. The photos shown below depict changes made at the unique Holden Arboretum. Note the size of rhododendron being moved.



Root Rot Disease Caused by *Phytophthora cinnamomi*



leaf chlorosis/wilting



root and crown necrosis



Bud hardy zone 6
Heat tolerant zone 8
Dense, glossy foliage
Floriferous

Breeding with
Resistant Species
R. hyperythrum



How well will resistance hold up under stressful growing conditions?

Experiments show that resistance to root rot in *R. hyperythrum* is maintained under abiotic stress

- flooding stress ✓
- heat stress ✓
- salt stress (maybe)
- drought stress ?

Southern Trial:
Good Doers 2013



Resistance Breeding Adds to Existing
Methods of Control

drainage
container culture
fungicides
chlorination

+ host resistance

plants resistant on
their own roots
or
used as rootstock

ARS Convention May 15-18, 2014 Quail Hollow Resort Painsville, Ohio



Evening Speakers - Thursday



Ian Adams

- environmental photography
- natural, rural, historical and garden areas in and around Ohio.



Evening Speakers – Friday



Clem Hamilton

History of rhododendrons in the West using Holden's rare books collection

From plant early plant exploration to public popularity



The Rhododendrons of Sikkim-Himalaya (1849-51)
Joseph Dalton Hooker

Evening Speakers - Saturday



Rick Lewandowski

Tapping the Diversity and Adaptability of Native Plants to Enhance Modern Landscapes

Eastern/Southeastern US plant exploration



Rhododendron minus
Alabama populations



Stewartia malacodendron
silky camellia

Rhododendrons & Azaleas at 2014 Annual Plant Sale, Saturday, April 26, 2014
Garage, Vineland Research & Innovation Centre, Victoria Avenue, Vineland Station



EG Cherry Drops



EG Cherry Drops Fall Colour



EG Girard's pleasant White



EG Herbert



EG Herbert Fall Colour



EG Rosebud



EG Stewartsonian



Dec Azalea Arneson's Gem



Dec Azalea Baltic Amber



Dec Azalea Girard's Border Gem



Lep Amy Cotta



Lep Bluenose



Lep Checkmate



Lep Cornell Pink



Lep Karin Seleger





Elepidote Double Bess



Elepidote Dreamland



Elepidote Gartendirector Rieger



Elepidote Golden Gate



Elepidote Hachman's Belona



Elepidote Hachman's Charmant



Elepidote Hachman's Kabarett



Elepidote Kalinka



Elepidote Melrose Flash



Elepidote Polarnacht



Elepidote Rimini



Elepidote Vernus



Helleborus Pink Frost



Helleborus Onyx Odyssey



Helleborus Peppermint Ice



Helleborus Rose Quartz



Peony Suffruticosa HANAKISOI



Peony Suffruticosa Shimamishiki



"Niagara 2014 Annual Plant Sale"

Members' Pre-Order form

Name:

Address:

.....Postal Code

Telephone: Email:

* These prices per plant apply to Memberships paid prior to April 6, 2014

* Prices include members' 10% discount and all applicable taxes.

Details at: http://www.rhodoniagara.org/2014_sale/Plant_descriptions_2014_Annual_Sale.pdf

Plant	Members' Price	Qty.	Plant	Members' Price	Qty.
EVERGREEN AZALEAS			LARGE LEAF RHODODENDRONS		
Cherry Drops	\$18		Bodacious aka Roadside Bounty	\$22	
Girard's Pleasant	\$20		Double Besse (3 Gallon)	\$28	
Herbert	\$20		Dreamland	\$22	
Rosebud (Pink)	\$20		Gartendirector Rieger	\$22	
Stewartstonian	\$20		Golden Gate	\$22	
			Hachman's Belona	\$22	
			Hachman's Charmant	\$22	
			Kabarett	\$22	
			Kalinka	\$22	
DECIDUOUS AZALEAS			Melrose Flash (3 Gallon)	\$28	
Arneson Gem	\$22		Polarnacht	\$22	
Baltic Amber	\$22		Rimini	\$22	
Border Gem	\$22		Vernus	\$22	
SMALL LEAF RHODODENDRONS			HELLEBORUS		
Amy Cotta	\$23		HGC Pink Frost	\$15	
Bluenose	\$18		Onyx Odyssey	\$20	
Checkmate	\$20		Peppermint Ice	\$20	
Cornell pink	\$20		Rose Quartz	\$22	
Karin Seleger	\$20		PAEONIA (TREE PEONIES)		
Mary Fleming	\$20		Suffruticosa HANAKISOI	\$42	
Patty Bee	\$20		Suffruticosa SHIMAMISHIK	\$48	

Total number of plants ordered # Please make Cheque (payable to **ARS - Niagara**) \$

* **Pre - Orders close April 19, 2014**

* **Pickup** between 9am and 11 am at the Plant Sale, Saturday, April 26th,
at Vineland Research & Innovation Centre, Victoria Avenue, Vineland Station

Mail this form and Cheque to: Lillie Haworth
4 Deer Park Court, Grimsby, ON L3M 2R2

For Information concerning orders write to:
ljhaworth@sympatico.ca or **Call:** 905-945-2433