

**2009**  
***Annual Plant Sale***



# 2009 Annual Plant Sale



**Saturday, April 25 2009 10 a.m.**

**Main Garage, HRIO (Vineland Research & Innovation Centre)**

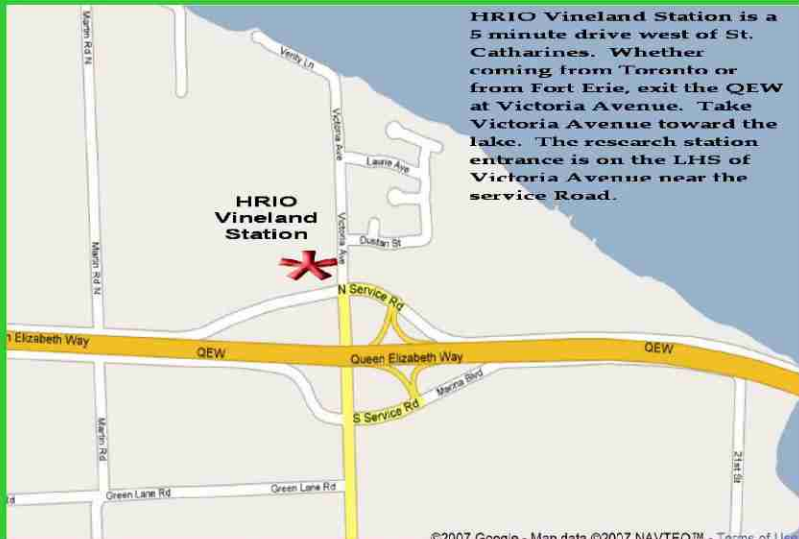
**Victoria Avenue – Vineland, Ontario**



**HRIO  
Vineland  
Station**



**HRIO Vineland Station is a 5 minute drive west of St. Catharines. Whether coming from Toronto or from Fort Erie, exit the QEW at Victoria Avenue. Take Victoria Avenue toward the lake. The research station entrance is on the LHS of Victoria Avenue near the service Road.**



# **Annual Plant Sale**

## **Saturday, April 25, 2009 10 a.m.**

**This slide show contains photos and descriptions of all varieties of Azaleas, Lepidotes and Elepidotes to be available at the Annual Plant Sale of the Niagara Region Chapter of the Rhododendron Society of Canada, Saturday, April 25, 2009 at the Vineland Research & Innovation Center - the Former HRIO Guelph University Research Station - on Victoria Avenue, Vineland.**



# Advance Orders for Members

This year again we offer our pre-sale program to complement the on-the-ground sales at Vineland. Members, who wish to guarantee availability of their choice, are invited to send their request with a cheque for the appropriate amount to .....

**Lil Haworth, 4 Deer Park Court, Grimsby, ON, L3M 2R2**

Your request will be collated and plants will be available for pickup at the sale at 10 a.m. on Saturday, April 25, 2009.



## Special Note

Cultivars being offered this year have characteristics of being cold hardy and heat tolerant. All of these cultivars have been grown in Niagara for at least 2 years and have proven to be hardy and heat tolerant. But they must be treated as any other rhododendron.

## Growing Any Rhododendron

All rhododendrons and azaleas demand continuous oxygen and moisture at the roots as a fundamental requirement.

This requirement is satisfied for these plants when excellent drainage and a cultural mix very heavy in organic material are provided. Growing these plants in a mixture of equal parts COARSE peat moss, composted pine bark and compost provides these conditions. Avoiding drying out of the root ball during drought is an important prerequisite.

## **Acknowledgements**

Photographs of cultivars shown on the following pages have been obtained from various sources. We are grateful to all those who have granted permission to use their original work in this way. Originators names appear on the photographs. Where no name appears on a photograph, its source is unknown to us.

Descriptions have been obtained from various sources on the www. These descriptions have been integrated with our own experiences in Southern Ontario and those of colleagues who grow rhododendron and azaleas in similar climates.

We thank everyone for their assistance but take personal responsibility for any errors that may remain.

Nicholas Yarmoshuk

**Cultivars Grown  
by**

**Blue Sky Nursery**  
**A Wholesale Grower**  
**Beamsville, Ontario**

**Plants are in 2 gal or 3 gal pots depending on variety.  
All plants in this section are priced at \$25 per 2 gal plant  
And 30 per 3 gal plant as noted on the plant's page.**

# Evergreen Azaleas in the Project

Evergreen azaleas are more correctly "persistent-leaved" azaleas. They grow a set of spring leaves which are dropped in the fall, and a set of summer leaves which persist through the winter. While evergreen azaleas are primarily valued for their bright spring colours their fall leaf colours can provide as much colour in the landscape, but much closer to the ground, as the sugar maples of Ontario and Quebec.

Some small-leaved rhododendrons look like evergreen azaleas. Most azalea flowers have only 5 or 6 stamens, while *most* rhododendrons have 10 stamens. Azalea leaves typically have long hairs along the underside midrib, are typically thinner than "small-leaf" rhododendrons and azalea leaves are more pointed than rhododendron leaves. Finally, using a magnifying glass, look at the underside of a leaf for tiny round structures called scales—azalea leaves *never* have scales, while small-leaved rhododendron leaves are *always* covered with scales (the more correct name for small-leaved rhododendrons is "lepidote" rhododendrons, where lepidote means "covered with scales"). Evergreen azalea leaves are rarely longer than 1 to 2 inches (2-5 cms). Leaves of most azaleas are a solid green. While leaves of most varieties are roughly football-shaped a few are narrow and strap-like. For example 'Koromo -shikibu'.

In general, evergreen azaleas grow slowly. Most average 3- 5 inches (7-12 cms) of growth per year depending on a host of factors, including climate, seasonal variations, maintenance programs and fertilization. Azaleas prefer many of the same cultivation conditions that rhododendrons do, such as acidic soil, filtered or partial sun, good drainage, and a regular watering schedule. Remember azaleas begin to initiate bud formation following their spring growth (usually late June through July). The soil must be kept moist at all times and pruning after the end of June will likely destroy blossoms for the following year.



**MOTHER'S DAY** - A Kurume azalea hybrid derived from 'Honode-giri,' with bright crimson flowers even- very small-leaves. Flowers are doubles and hose-in-hose. A lovely sight when in full bloom. Does well in full sun. Kurumes tend to be upright twiggy azaleas with dense evergreen leaves & small flowers. They're cold-hardy & most Kurumes like about half shade, half sun, though the 'Mother's Day' azalea is fond of full sun in zones that aren't too warm, though it will certainly tolerate some shade. 2 gal



**MOTHER'S DAY - Plant habit.** This photo was taken in May. Kurume evergreen azaleas have done well after 20 years in a garden in St. Catharines. The ideal condition would be moist well-drained acidic soil in temperate weather, but it is forgiving of conditions less than ideal just so long as the soil isn't alkaline or too dry or salty or the location too windy. Blooms from mid April to Mid May. This photo was taken in April. 2 gal

## Girard's Renee Michelle



Photo from Girard's Nursery



Girard's Renee Michelle

**Evergreen Azalea blooms very late season. Dark green foliage, compact habit. Large clear pink single flowers 2 1/2" to 3". 2 gal**





### Rosebud

#### **Louise Gable x Caroline Gable**

Midseason bloom. 4 ft after 10 years. Flower broadly funnel-shaped, double, hose-in-hose, 1 1/8" across, strong purplish-pink, flushed with slight veining of deep purplish pink. Generally hardy in St. Catharines. Blossoms subject to failure after late spring frost. 2 gal



**Stewartstonian**

**A Gable hybrid. unknown x unknown.**

**Early Midseason to Midseason.**

**4 ft after 10 years. Brilliant and hardy**

**2 gal.**

Rhododendron 'Stewartstonian' (Gable)



Londonderry, NH

S & J Perkins

**STEWARTSTONIAN** - A evergreen azalea Gable introduction for which the plant parents are unknown. A dense compact small leafed plant with a compact habit with 3/4" long, glossy, green tinged red, wine red in winter. In St. Catharines has never failed to bloom and is 3 ft tall x 2 ft wide after 20 years. Bright yet dark red leaves are eye popping when in full bloom. hardy to -15F. 2 gal

## **Deciduous Azaleas**

Deciduous azaleas drop their leaves in the fall, and grow a new set of leaves in the spring. There are 16 species of azaleas native to areas of the US, and more species are native to Japan.

One way the species are distinguished from one another is whether the blooms appear before/with the leaves, or after the leaves appear. Other identifying characteristics include the bloom fragrance, color and shape, and (with the help of a hand lens) the hairs on the blooms, pedicel, calyx, new stems, and bud scales. The hairs on each of these plant features may be abundant, sparse or absent, and they may be glandular (sticky little balls on the ends which make them appear like little matchsticks) or eglandular (not glandular), or mixed.

There are also thousands of hybrids derived from these species, which are typically distinguished by their bloom color, type and time, and their foliage and plant habit—and by very carefully keeping the label intact.

Some deciduous azaleas are cold-hardy to Zone 3 (-40°F)(-40°C), while many more are cold-hardy to Zone 5 (-20°F)(-29°C) and warmer. *R. austrinum*, the "Florida flame azalea", is the most tolerant of warm temperatures, and is bred into other deciduous hybrid azaleas to increase their heat tolerance.



## **Deciduous Azaleas**

**Deciduous azaleas grow well in very bright light to full sun but they need sharp drainage and good watering during hot spells.**

**These plants lose their leaves in the winter after providing a fine display of foliage colour. They perform very well in St. Catharines.**

**In the spring or in the pot, when they are first obtained, they appear to be long sticks with buds. Once they leaf out and come to bloom, the effect is breathtaking in the brilliance and size of blooms.**

**Grouped together and planted on 3 foot centers with deciduous azaleas of different colours they create a delightful bright kaleidoscope in the May garden. These plants are hardy in Southern Ontario.**



### **Arneson Gem**

(C. B. Van Nes x Koster's Brilliant Red) x unknown  
Deciduous Azalea, Early Midseason to Midseason  
3 ft in 10 years 2 gal





### **Arneson Gem**

(C. B. Van Nes x Koster's Brilliant Red) x unknown  
Deciduous Azalea, Early Midseason to Midseason  
3 ft in 10 years 2 gal



## **Arneson's Ruby**

**Deciduous Azalea**

**A stunning plant with strong red, wavy-edged flowers in ball-shaped trusses that are produced in abundance in midseason. A vigorous grower with an upright habit.**

**2 gal**



Rhododendron 'Weston's Innocence' (Mezitt)



**Weston's Innocence**

**A superior hybrid of arborescence x viscosum**

Late June early summer flowering. A vigorous-growing compact plant with upright branches, becomes mound-shaped with age. Heavy flowering with strongly scented small white blossoms. Foliage is twisted, slightly glossy, and has a bronze cast in summer. Little susceptibility to mildew. Burgundy-red fall foliage, often with yellow ribs.

2 gal



### **Weston's lemon Drop**

1976 selection from a block of 1963 hybrids (viscosum x Unknown)

Summer flowering. Vigorous with stiff upright branches topped with peach buds and pale yellow flowers in mid July with slight lemony fragrance. Holds up well in hot sun, often for 2 weeks or more. Foliage is small, curled downward, a dusty blue-green color in summer. Leaves change to dark pink-red on exterior branches and to yellow on interior branches in fall. Resistant to mildew. Winter stems are a distinctive red-brown. Very hardy.

2 gal



### Lollipop

[(viscosum x cumberlandense) x arborescens]

Extremely fragrant pink flowers with a light pink and yellow flare in mid June. By late June mature flowers are silvery pink and continue to give a moderately heavy, sweet, lingering fragrance to the garden. Autumn color begins in early September and continues with red-orange tones through October. We have experienced no leaf mildew problems. 2 gal



**MANDARIN LIGHTS** – A deciduous azalea of the Northern Light series developed by Harold Pellet at the University of Minnesota. Probably the best performing of the Northern light series. Requires very bright light to full sun. These plants lose their leaves in the winter after providing a fine display of foliage colour. In the spring or in the pot, when they are first obtained, they appear to be long sticks with buds. These plants are hardy to -30F. 2 gal



### **Northern Hi-Lights Azalea**

Hybrid of an Exbury seedling and an unidentified azalea seedling. The flowers are creamy white with a bright yellow upper petal and have a cold hardiness rating of -30 degrees F. Plants grow relatively slowly to four feet high and four to five feet wide. The dark green foliage has some resistance to mildew. 2 gal



**Northern Hi-Lites**



### Weston's Popsicle

Wonderfully fragrant, dark pink flowers with an orange flare open in early summer, well after most other azaleas are done. Burgundy fall color. 2 gal

Rhododendron 'Popsicle' (Mezitt)



galem, Inc

U & J Perkins

### Weston's Popsicle

Wonderfully fragrant, dark pink flowers with an orange flare open in early summer, well after most other azaleas are done. Burgundy fall color. 2 gal





### Northern White lights

prinophyllum x unknown white Exbury

Very floriferous; trusses of four or five funnels possess an excellent clove scent; ten-year height of five or six feet; Flowers precede the leaves & are still present when the leaves are in. Autumn colors tend toward purples. Likes full sun to partial sunlight, persistent moisture in well drained soil is best; wilting leaves bounce back immediately when watered. 2 gal

## **Lepidote Rhododendrons**

**Rhododendrons are divided into two categories: lepidote and elepidote.**

**The lepidote rhododendrons have minute scales on the leaves and are generally the small-leaved species.** (*See the earlier page on Evergreen Azaleas for a short discussion of "minute scales".*)

**Conversely, the elepidote rhododendrons don't have leaf scales and are generally the large-leaved species.**



**AGLO** - Bright pink, splash of red in the throat, aromatic bright green foliage turns mahogany in winter, often has shades of red and yellow in fall. Requires good drainage. Blooms a week or more after PJM in spring. Medium growth rate. 3-5 ft x 3-5 ft wide. Full sun to partial shade. Hardy to -25F. 2 gal

Rhododendron 'April Mist' (Mehlquist)



Essex, NH

E. J. Perkins

### **April Mist**

(minus Carolinianum Group x mucronulatum 'Cornell Pink') x dauricum,  
white form, selfed.

Early season. 1 m (3 ft) after 10 yrs. 2 gal



**April Mist Plant Habit**

**2 gal**



## **Bubblegum**

**Chemically induced tetraploid of 'Weston's Aglo'.**

**Single, pink flowers with small foliage and showy red stems. An offspring of R. 'Weston's Aglo' which is a P.J.M.-type rhododendron with larger and make a better show against the larger foliage. 2 gal**



Fall colour Cornell Pink foliage

**CORNELL PINK** - Rh. *Macronulatum* Cornell Pink. A blaze of wonderful eye catching pink in the early garden. The color is a pure phlox pink without any trace of lavender. It opens deep pink and matures to a soft, pale pink. Blooms at about the same time as PJM and in some cases a week earlier. In St.Catharines 4 ft tall x 3 ft wide after 20 years. Prefers well watered conditions with sharp drainage. The pinky lavender blooms of *Rhododendron Macronulatum* make an excellent compliment to the earliest of spring blooming bulbs, especially deep blues like *Scilla siberica* and *Chionodoxa* (glory of the snow), as well as yellows like *Aconite* and *Narcissus February Gold*. The leaves are small and they turn shades of red and yellow in the fall. However the plant is totally deciduous. In the spring, when in full bloom, Cornell Pink is totally leafless, giving a nice airy effect and showing the blossoms to maximum effect. This variety is very rarely available. Does not perform well if allowed to dry out.

3 gal



## The PJM Group of Lepidotes

*Rhododendron* 'P.J.M.' is not a single cultivar, but rather a group of hybrids that were derived from a cross of *R. carolinianum* and *R. dauricum* var. *sempervirens* performed at Weston Nurseries in Massachusetts in 1939.

Though the resulting seedlings have been relatively uniform, variability does exist in terms of plant habit, foliage color, flower color, bloom time and growth rate. They all have a pleasant bronze colour in winter.

Harold Greer in his stunning *Greer's Handbook to Available Rhododendrons* lists 7 different varieties beginning with the phrase PJM: Among these are 'Elite', 'P.J.M. Compact Form', 'Regal', 'Victor'. They vary in depth of colour, compactness, ultimate size, and time of first bloom.

These 'P.J.M.' hybrid cultivars are vegetatively propagated to assure uniformity.

The P.J.M collection is among the hardiest, easiest to grow and most reliable of evergreen rhododendrons.

P.J.M. varieties grown in full sun tend to be more compact and shorter in ultimate height. P.J.M. cultivars are often grown as hedges and are shorn to achieve bushy plants.

Prepared by N. Yarmoshuk from web site information of Weston Nurseries, Greer Gardens and [www.hort.uconn.edu/plants/r/rhopjm/rhopjm1.html](http://www.hort.uconn.edu/plants/r/rhopjm/rhopjm1.html)



Rhododendron 'Checkmate' (Mezitt)



### Checkmate

Tissue culture from PJM Victor. Lepidote. 2' x 2'. Masses of small, lavender-pink flowers bury this dwarf PJM-type rhododendron in early spring. This is the most compact form of PJM commercially available. Dark mahogany winter foliage. Checkmate rhododendrons have beautiful dark, mahogany winter foliage. Most dwarf of all the PJM plants. 2 gal

## Mezitt's PJM Compact

A photograph of this cultivar is not available. Harold Greer in his *Greer's Guidebook to Available Rhododendrons*, 3<sup>rd</sup> Edition, compares Compact to Checkmate as "the same cheery flowers on a more compact growing habit". The photos to the right show the bright cheerfulness of this group of cultivars.



Photo by N.Yamashita



**Rhododendron 'Midnight Ruby' (Mezitt)**



Weston, MA

S & J Perkins

**MIDNIGHT RUBY** - A Mezitt, Weston Nursery introduction ('Olga' x PJM Group). Red-purple, yellowish eye. Compact growing; almost black-bronze winter foliage. Compact upright habit. Early season bloom. 2 ft tall x 3 ft wide. Does well in full sun to partial shade. Hardy to -25F. 3 gal

## **Elepidote - Large Leafed -** **Rhododendrons**

**"Big Leaf" rhododendrons. These are what most people first think of when they hear the word rhododendron. "Elepidote" literally means "without scales," referring to a characteristic of the familiar large leaf rhododendrons.**

*(See earlier material in this presentation on Evergreen Azaleas.)*

**Foliage of this class of rhododendrons, although generally larger in size, can vary from about an inch long as in the species *R. proteoides* to as much as three feet long in the species *R. sinogrande*.**

**Some have incredible fuzzy indumentum on the new growth and under the leaves, as on *R. yakushimanum*. (See next slide.) The flowers can be almost any color.**

**This group includes a very large number of hybrids.**

## Indumentum - Tomentum

The fuzzy material on the surface of the leaf, tomentum, is not mildew & is normal for most cultivars with *yakushmanum* in the parentage. This wears-off during the summer's growth. The fuzz on the underside, indumentum, also normal for plants with this parentage, is permanent.





CUNNINGHAM'S WHITE - caucasicum x ponticum, white flowers with greenish yellow blotch. Buds flushed with pink. Dark green foliage. Mid season. 3- ft tall x 4 ft wide. Prefer some shade, but require bright light to bloom well. Hardy to -25F. 2 gal



**CUNNINGHAM'S WHITE** - caucasicum x ponticum, white flowers with greenish yellow blotch. Buds flushed with pink. Dark green foliage. Mid season. 3- ft tall x 4 ft wide. Prefer some shade, but require bright light to bloom well. Hardy to -25F. 2 gal



**Cunningham's White**



**Cunningham's White – Plant habit**  
**4 ft after 10 years. Late midseason**  
**2 gal**



### **Hong Kong catawbiense var album x Crest**

**Midseason bloom. 5 feet after 10 years. Held in flat trusses of 13. Bred for cold hardiness, this tall, offers an upright, well-branched habit and flat, glossy yellow-green leaves. Pale yellow flowers appear in late spring, each one with a bright greenish-yellow blotch in its throat. Grow the plant in moist but well-drained leafy, humus-rich acidic soil and partial shade. In hot areas, 'Hong Kong' can be susceptible to leaf dieback.**



Hong Kong

catawbiense var album

x

Crest

2 gal



**FANTASTICA** - A Hachman hybrid, a new "good doer" is a prolific bloomer . Its flowers appear in late May and are deep rose fading to white in the throat, accented by light citron-green spots. It has long, elliptic leaves with a white-wooly indumentum beneath. Bicolor rhododendrons have a contrasting color along the edge of each petal—either a thin "picotee" edge or a gradual shading. This two-tone coloration adds drama and texture to the garden. Blooms mid May. 3-4 ft tall x 3-4 ft wide. hardy to -15F. 2 gal



### **Fantastica**

Mars x degrobianum ssp yakushmanum 'Koichiro Wada'.

Midseason to Late Midseason. Flower deep purplish-pink, shading to white in throat, light spotting of grayish greenish-yellow. Very large trusses of about 20 flowers. Leaves elliptic, dark green with woolly, tan-coloured indumentum. Dense and compact shrub.

2 gal

Rhododendron 'Fantastica' (Hachmann)



Pertsmouth, RI

Dick Brooks

**FANTASTICA** – A Hachman hybrid. Its flowers appear in late May and are deep rose fading to white in the throat, accented by light citron-green spots. It has long, elliptic leaves with a white-wooly indumentum beneath. Bicolor rhododendrons have a contrasting color along the edge of each petal—either a thin “picotee” edge or a gradual shading. This two-tone coloration adds drama and texture to the garden. Blooms mid May. 3-4 ft tall x 3-4 ft wide, hardy to -15F. 2 gal



**FANTASTICA** - Hachman, a plant breeder in Germany, has been described as probably the world's best rhododendron hybridizer. This consistently reliable cultivar, relatively new to North America, is a prolific bloomer. It performs well in the harsh climate of southern New Hampshire. 2 gal



Rhododendron 'Ingrid Mehlquist' (Mehlquist)



**INGRID MEHLQUIST** - An exceptional Yak hybrid developed by Gus Mehlquist of the University of Connecticut. In late midseason (later than most other Yaks), clusters of large pink buds open to ball-shaped trusses containing 20 or more pure white blooms. Just as attractive is the foliage, which is deep green and convex, with light indumentum below. Compact, well-branched habit. Very floriferous at a young age. 2' x 3'. **HARDY TO -25F** 2 gal

**Rhododendron 'Ingrid Mehlquist' (Mehlquist)**



Ashford, CT

S & J Perkins

**Ingrid Mehlquist – Young plant habit – blooms at an early age.**

**2 gal**



### Nova Zembla

Parsons Grandiflorum x hardy red hybrid

Midseason bloom. A long time favourite. Reliably Hardy. 5 ft after 10 yrs.

2 gal



**Nova Zembla (Plant Habit)**

Parsons Grandiflorum x hardy red hybrid

Midseason bloom. A long time favourite. Reliably Hardy. 5 ft after 10 yrs  
2 gal



### Purple Passion

['Purple Splendour' X 'Catalpa']

Deep rich purple flowers yellow stamens in mid-season and dark green, very disease resistant foliage. Introduced from cold Johnstown, PA, where winter temperatures regularly reach  $-20^{\circ}\text{F}$ . Outstanding variety has trusses with a white flare on the upper lobe, leaves are deep green, habit is vase-shaped. 2 gal



## University of Helsinki Haaga

*brachycarpum* ssp *tigerstedtii* x Doctor H.C. Dresselhuys

Very hardy. An upright grower reaching 150 cm tall with attractive, dark green, coarse foliage. A late bloomer with stunning bright pink flowers

Marked with red-orange freckles. Does best in full sun to partial shade; requires an evenly moist well-drained soil for optimal growth, but will die in standing water.

A low maintenance shrub, and should only be pruned after flowering to avoid removing any of the current season's flowers. It has no significant negative characteristics. 2 gal





**VERNUS** - A Shammarello / Leach hybrid is probably the first large-leaved rhododendron to flower in the spring, and it's a beauty with star-shaped shell pink flowers, each with a dark red blotch. Plants are sun tolerant, vigorous, and cold hardy. Upright open habit. 5' x 5' after 20 years. Hardy to -25F. 2 gal





**VERNUS - Plant habit**    2 gal

**Cultivars Provided  
by**

# **Nettlecreek Nursery Fonthill, Ontario**

**Prices are shown on description of each cultivar**

*Rhododendron dauricum* 'Arctic Pearl' (Baldsiefen)



Salem, NH

S & J Perkins

### Arctic Pearl

(form of *R. dauricum*) elepidote, Baldsiefen selection

White flowers adorn this cute small leaved upright plant in early to mid April. A lovely sight with Cornell Pink and other dauricum. **4' after 10 years.** Hardy to -25F (-32C) Price \$15

Rhododendron 'April Rose' (Mehlquist)



Rhododendron 'April Rose' (Mehlquist)



APRIL ROSE - [(minus) X (dauricum-Var. Album)]X [(mucronulatum-Var. Cornell Pink) X (dauricum)] lepidote. Rose shaped deep purple flowers are compact and unique looking. Truly a "MUST HAVE". April to early May blooming. Regardless of climate, everyone wants this when in bloom. Deep green glossy foliage. Compact, and bushy plant habit. Best of the "April" series. Plant in sun or shade. Hardy (-25F. to -20F.)

Price \$15





**APRIL ROSE - [(minus) X (dauricum-Var. Album)] X [(mucronulatum-Var. Cornell Pink) X (dauricum)] lepidote. Rose shaped deep purple flowers are compact and unique looking. Truly a "MUST HAVE". April to early May blooming. Regardless of climate, everyone wants this when in bloom. Deep green glossy foliage. Compact, and bushy plant habit. Best of the "April" series. Plant in sun or shade. Hardy (-25F. to -20F.) Price \$15**



## APRIL SONG

[(unnamed double from PJM Group x mucronulatum) x dauricum var album] x (Pioneer x unnamed hybrid form PJM Group).

Large, purplish pink flowers have nearly white inner, 2" across, hose-in-hose, fused stamens form ring of contrasting lighter pink color. Ball-shaped truss with 10 flowers. Early midseason blooming, upright, dense, wide-growing shrub. Not prone to root rot. Price \$15

Rhododendron 'April Song' (Mezitt)



Acton, MA

S & J Perkins

### APRIL SONG

[(unnamed double from PJM Group x mucronulatum) x dauricum var album] x (Pioneer x unnamed hybrid form PJM Group).      **Price \$15**





**CHECKMATE** - A compact form of the famous PJM grows much more compactly, requires a minimum of maintenance and is well suited for the smaller garden. lavender pink flowers with dark mahogany winter foliage. Blooms cover the plant in early spring. 2 ft tall x 2 ft wide. Hardy -20F to -25F. Very suitable for the small garden.    *Price \$15*



### Cherry Cheesecake

Cherry Cheesecake is an improved form of Hachmann's Charmant Rhododendron. Flowers are white with red edges and a red blotch. Large lush mounding foliage on this shrub. There is not much information available from the cognoscenti inhabiting the rhodochat line. Price \$12





**Hachman's Charmant grown in Denmark**

**Price \$12**



### Hot Dawn

'Mars' x [R. yakushimanum exbury for x 'Mars']

A Brueckner Hybrid. Vivid purplish red flowers, with frilly edges and lots of substance, are set off by excellent dark green foliage in late midseason. Blooms consistently as a young plant, making it a good choice for growers. Upright habit. 4' x 4'. Price \$12

**Rhododendron mucronulatum var. album**



**Salem, NH**

**S & J Perkins**

White form of mucronulatum. This specie is among the first to bloom in any area. It is a splendid addition to accompany other early blooming forms such as Cornell Pink.

**Price \$12**





**Rhododendron mucronulatum var. album**



Salem, NH

S & J Perkins

White form of mucronulatum. This specie is among the first to bloom in any area. It is a splendid addition to accompany other early blooming forms such as Cornell Pink. All mucronulatum provide a very open feeling in the garden and are a special treat because they bloom so early.

Price \$12



**Rhododendron 'Thunder' (Mezitt)**



Concord, MA

S & J Perkins

### **Thunder**

Weston Nurseries introduction. Deep purplish red blossoms are produced in early midseason on this floriferous PJM seedling. Foliage is small and glossy and turns a dark mahogany in winter. Cold hardy but also very heat tolerant. Dense habit. Lepidote. 3' x 3' after 10 years. Price \$12

Rhododendron 'Thunder' (Mezitt)



Rhododendron 'Thunder' (winter color)



S & J Perkins

**P4M**

***2009 Plants for  
Members***

**Preliminary List**

## ***2009 Plants for Members (P4M's)***

The cultivars listed in this file are available exclusively to members of the Niagara Chapter of the Rhododendron Society of Canada.

These cultivars will be available at the General Plant Sale on April 25 at 10 a.m. at the Vineland Innovation and Research Centre.

The price to members is \$12 per plant. The usual 10% discount applied to plants listed in the preceding General Sales listing does not apply to these plants.

These P4M plants, offered at \$12 each , have been grown-on by volunteers for two years. The price to members serves to recover costs associated with propagation, phyto-sanitary certificates, cost of shipping from the plant propagator and incidental costs associated with obtaining the cuttings, rooting them & growing-on for two years.



**Rh. Adenopodum**

**See following page for full description.  
Additional images follow description.**

## Rh. adenopodum

An elepidote species native to E. Sichuan and Hubei provinces of China, growing in rocky woods at elevations of 5000-7000 feet.

Plant habit is spreading, broader than tall, reaching 4-10 ft (1-3 m) high. Young shoots and leaves are densely tomentose with whitish or fawn tomentum. The leaf tomentum disappears with maturity but the underside of the leathery leaves is covered in thick felty or woolly indumentum. The whitish, fawn, or brown indumentum is formed by two layers of hairs and short stalked glands. The long narrow leaves are up to 7 inches long and only 1 to 2 inches wide.

Because of its heat tolerance, it seems to be offered by more nurseries in the South.



Photo by H. Elberg

Rh. Adenopodum



**GIGI**

Photo by MGY



**Gigi in Yarmoshuk  
Garden, St. Catharines**

**GIGI** Dexter hybrid.  
Unknown parentage.  
Red flower open funnel-shaped wavy lobes 3 ¼ inch across, vivid purplish red with deep red spotting. Ball shaped truss of 15-18 flowers.  
Late season mid season bloom. 5 feet high after 10 years. Hardy to -21°C.  
Broad dense habit, prefers a shady location.  
Grown in Yarmoshuk garden since 1980.

Shown here, 8 ft tall, after almost 30 years in shaded north exposure with evergreen azalea "Cascade".





Plant labeled "Ilam Violet" but  
is believed to be "Mood indigo"

Plant in photo is 20 years old  
growing in Yarmoshuk's garden  
In St. Catharines.

## Mood Indigo aka Ilam Violet

This plant was obtained at a Niagara Region plant sale in the late 1970's.

It has grown in Yarmoshuk's garden for about 20 years and is now about 5 feet tall and 2-3 feet wide.

It grows in full sun, planted in very organic soil comprised of coarse peat moss, grow bark and compost.

It has an upright narrow growth habit, slightly open to reveal its limb structure. It is slow-growing. It adds limbs or size very slowly.

In the Spring of 2007, it's leave were badly damaged during the spring bright sun and very cold nights. Yet is was thoroughly bud hardy and provided a good show of blooms against a brown background. By Fall the leaves had fully recovered and it has produced excellent bud set for 2008.

**Ilam Violet**



Photo by N. Yarmeshuk



## Koromo Shikabu

This is a very hardy evergreen azalea that has grown in the Yarmoshuk's Garden for more than 20 years. It is now 2 feet tall by about one foot wide. It has produced flowers each year. It stands out against any yellow azalea that blooms at the same time. Rarely, if ever, seen in the local trade.





**Azalea Koromo Shikibu**  
(blue petals in center right of photo) with (yellow) azalea Luteum





**Azalea Koromo Shikibu with Azalea Cascade (left) & Azalea Luteum (right)**

**Marge Hinerman**



**Rh. smirnowii**





**Rhododendron 'Spellbinder' (Leach)**

Sally and John Perkins

**Russell Harmon x Robin Hood**

**Leach hybrid. Pink flower 3 ½ inches across. Ball shaped truss holds 16 flowers. Early bloomer hardy to - 26°C. 4 feet tall in 10 years**

## VINEROUGE



**A product of the Vineland HRIO Rhododendron Program  
Registration information and history appear on following page**

## VINEBROOK

Flepidote. *R. smirnowii* x 'Lady Bessborough'. Cross (1961) and raised by Roy Forster; named and described by A.W. Smith, both Horticultural Research Institute of Ontario, Vineland Station, Ontario, Canada; introduced and registered by H.R.I.O. Flowers openly funnel-shaped, 3 1/8" across x 1 9/16" long, 15 per truss, 5-lobed, wavy margins. White flowers with strong purplish red (64B) flares in throat of dorsal lobe, and light spotting of same color extending itself half way up the lobe. Calyx 1/16", medium green. Ball truss, 6" across x 5 7/8" high. Leaves 5" x 2", elliptic, acute, cuneate, smooth; under surface has slight felt-like indumentum. Plant tall, upright, spreading, open growth habit, 6' high x 3' wide in 25 years from seed. Blooms late May. Plant and bud hardy to at least -16F.

## Special Note

Cultivars being offered this year have characteristics of being cold hardy and heat tolerant. All of these cultivars have been grown in Niagara for at least 2 years and have proven to be hardy and heat tolerant. But they must be treated as any other rhododendron.

## Growing Any Rhododendron

All rhododendrons and azaleas demand continuous oxygen and moisture at the roots as a fundamental requirement.

This requirement is satisfied for these plants when excellent drainage and a cultural mix very heavy in organic material are provided. Growing these plants in a mixture of equal parts COARSE peat moss, composted pine bark and compost provides these conditions. Avoiding drying out of the root ball during drought is an important prerequisite. If coarse peat moss is unavailable use whatever peat moss is available .



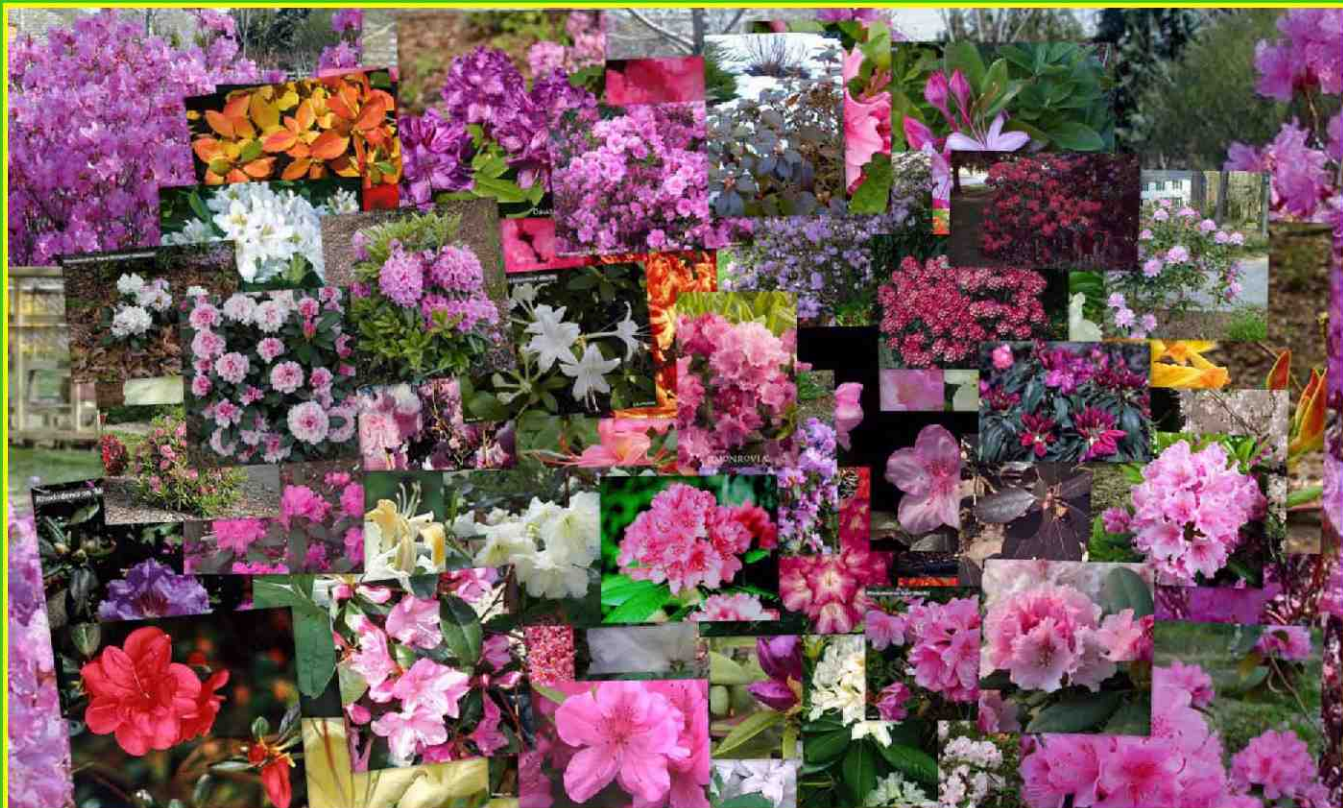
# Advance Orders for Members

This year we are continuing an innovation introduced last year to complement the on-the-ground sales at Vineland. Members who wish to guarantee availability of their choice, are invited to send their request with a cheque for the appropriate amount to . . . . .

Lil Haworth, 4 Deer Park Court, Grimsby, ON, L3M 2R2

Your request will be collated and plants will be available for pickup at the sale at 10 a.m. on Saturday, April 25, 2008.

**2009**  
***Annual Plant Sale***



# 2009 Annual Plant Sale



**Saturday, April 25 2009 10 a.m.**

**Main Garage, HRIO (Vineland Research & Innovation Centre)**

**Victoria Avenue – Vineland, Ontario**



**HRIO Vineland Station is a 5 minute drive west of St. Catharines. Whether coming from Toronto or from Fort Erie, exit the QEW at Victoria Avenue. Take Victoria Avenue toward the lake. The research station entrance is on the LHS of Victoria Avenue near the service Road.**





# **Annual Plant Sale**

## **Saturday, April 25, 2009 10 a.m.**

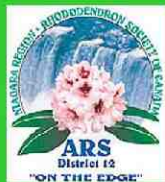
**This slide show contains photos and descriptions of all varieties of Azaleas, Lepidotes and Elepidotes to be available at the Annual Plant Sale of the Niagara Region Chapter of the Rhododendron Society of Canada, Saturday, April 25, 2009 at the Vineland Research & Innovation Center - the Former HRIO Guelph University Research Station - on Victoria Avenue, Vineland.**

# Advance Orders for Members

This year again we offer our pre-sale program to complement the on-the-ground sales at Vineland. Members, who wish to guarantee availability of their choice, are invited to send their request with a cheque for the appropriate amount to .....

**Lil Haworth, 4 Deer Park Court, Grimsby, ON, L3M 2R2**

Your request will be collated and plants will be available for pickup at the sale at 10 a.m. on Saturday, April 25, 2009.



## Special Note

Cultivars being offered this year have characteristics of being cold hardy and heat tolerant. All of these cultivars have been grown in Niagara for at least 2 years and have proven to be hardy and heat tolerant. But they must be treated as any other rhododendron.

## Growing Any Rhododendron

All rhododendrons and azaleas demand continuous oxygen and moisture at the roots as a fundamental requirement.

This requirement is satisfied for these plants when excellent drainage and a cultural mix very heavy in organic material are provided. Growing these plants in a mixture of equal parts COARSE peat moss, composted pine bark and compost provides these conditions. Avoiding drying out of the root ball during drought is an important prerequisite.



## **Acknowledgements**

**Photographs of cultivars shown on the following pages have been obtained from various sources. We are grateful to all those who have granted permission to use their original work in this way. Originators names appear on the photographs. Where no name appears on a photograph, its source is unknown to us.**

**Descriptions have been obtained from various sources on the www. These descriptions have been integrated with our own experiences in Southern Ontario and those of colleagues who grow rhododendron and azaleas in similar climates.**

**We thank everyone for their assistance but take personal responsibility for any errors that may remain.**

**Nicholas Yarmoshuk**

**Cultivars Grown  
by**

**Blue Sky Nursery**  
**A Wholesale Grower**  
**Beamsville, Ontario**

Plants are in 2 gal or 3 gal pots depending on variety.  
All plants in this section are priced at \$25 per 2 gal plant  
And 30 per 3 gal plant as noted on the plant's page.

# Evergreen Azaleas in the Project

Evergreen azaleas are more correctly "persistent-leaved" azaleas. They grow a set of spring leaves which are dropped in the fall, and a set of summer leaves which persist through the winter. While evergreen azaleas are primarily valued for their bright spring colours their fall leaf colours can provide as much colour in the landscape, but much closer to the ground, as the sugar maples of Ontario and Quebec.

Some small-leaved rhododendrons look like evergreen azaleas. Most azalea flowers have only 5 or 6 stamens, while *most* rhododendrons have 10 stamens. Azalea leaves typically have long hairs along the underside midrib, are typically thinner than "small-leaf" rhododendrons and azalea leaves are more pointed than rhododendron leaves. Finally, using a magnifying glass, look at the underside of a leaf for tiny round structures called scales—azalea leaves *never* have scales, while small-leaved rhododendron leaves are *a/ways* covered with scales (the more correct name for small-leaved rhododendrons is "lepidote" rhododendrons, where lepidote means "covered with scales"). Evergreen azalea leaves are rarely longer than 1 to 2 inches (2-5 cms). Leaves of most azaleas are a solid green. While leaves of most varieties are roughly football-shaped a few are narrow and strap-like. For example 'Koromo -shikibu'.

In general, evergreen azaleas grow slowly. Most average 3- 5 inches (7-12 cms) of growth per year depending on a host of factors, including climate, seasonal variations, maintenance programs and fertilization. Azaleas prefer many of the same cultivation conditions that rhododendrons do, such as acidic soil, filtered or partial sun, good drainage, and a regular watering schedule. Remember azaleas begin to initiate bud formation following their spring growth (usually late June through July). The soil must be kept moist at all times and pruning after the end of June will likely destroy blossoms for the following year.



**MOTHER'S DAY** - A Kurume azalea hybrid derived from 'Honode-giri,' with bright crimson flowers even- very small-leaves. Flowers are doubles and hose-in-hose. A lovely sight when in full bloom. Does well in full sun. Kurumes tend to be upright twiggy azaleas with dense evergreen leaves & small flowers. They're cold-hardy & most Kurumes like about half shade, half sun, though the 'Mother's Day' azalea is fond of full sun in zones that aren't too warm, though it will certainly tolerate some shade. 2 gal





**MOTHER'S DAY - Plant habit.** This photo was taken in May. Kurume evergreen azaleas have done well after 20 years in a garden in St. Catharines. The ideal condition would be moist well-drained acidic soil in temperate weather, but it is forgiving of conditions less than ideal just so long as the soil isn't alkaline or too dry or salty or the location too windy. Blooms from mid April to Mid May. This photo was taken in April. 2 gal

## Girard's Renee Michelle



Photo from Girard's Nursery



Girard's Renee Michelle

**Evergreen Azalea blooms  
very late season. Dark green  
foliage, compact habit. Large  
clear pink single flowers 2  
1/2" to 3". 2 gal**





Rosebud in St. Catharines ON

N. Yamoshuk

### Rosebud

#### **Louise Gable x Caroline Gable**

Midseason bloom. 4 ft after 10 years. Flower broadly funnel-shaped, double, hose-in hose, 1 1/8" across, strong purplish-pink, flushed with slight veining of deep purplish pink. Generally hardy in St. Catharines. Blossoms subject to failure after late spring frost. 2 gal





**Stewartstonian**

**A Gable hybrid. unknown x unknown.  
Early Midseason to Midseason.  
4 ft after 10 years. Brilliant and hardy  
2 gal.**

**Rhododendron 'Stewartstonian' (Gable)**



Londonderry, NH

S & J Perkins

**STEWARTSTONIAN** - A evergreen azalea Gable introduction for which the plant parents are unknown. A dense compact small leaved plant with a compact habit with 3/4" long, glossy, green tinged red, wine red in winter. In St. Catharines has never failed to bloom and is 3 ft tall x 2 ft wide after 20 years. Bright yet dark red leaves are eye popping when in full bloom. hardy to -15F. 2 gal



# Deciduous Azaleas

Deciduous azaleas drop their leaves in the fall, and grow a new set of leaves in the spring. There are 16 species of azaleas native to areas of the US, and more species are native to Japan.

One way the species are distinguished from one another is whether the blooms appear before/with the leaves, or after the leaves appear. Other identifying characteristics include the bloom fragrance, color and shape, and (with the help of a hand lens) the hairs on the blooms, pedicel, calyx, new stems, and bud scales. The hairs on each of these plant features may be abundant, sparse or absent, and they may be glandular (sticky little balls on the ends which make them appear like little matchsticks) or eglandular (not glandular), or mixed.

There are also thousands of hybrids derived from these species, which are typically distinguished by their bloom color, type and time, and their foliage and plant habit—and by very carefully keeping the label intact.

Some deciduous azaleas are cold-hardy to Zone 3 (-40°F)(-40°C), while many more are cold-hardy to Zone 5 (-20°F)(-29°C) and warmer. *R. austrinum*, the "Florida flame azalea", is the most tolerant of warm temperatures, and is bred into other deciduous hybrid azaleas to increase their heat tolerance.



## **Deciduous Azaleas**

**Deciduous azaleas grow well in very bright light to full sun but they need sharp drainage and good watering during hot spells.**

**These plants lose their leaves in the winter after providing a fine display of foliage colour. They perform very well in St. Catharines.**

**In the spring or in the pot, when they are first obtained, they appear to be long sticks with buds. Once they leaf out and come to bloom, the effect is breathtaking in the brilliance and size of blooms.**

**Grouped together and planted on 3 foot centers with deciduous azaleas of different colours they create a delightful bright kaleidoscope in the May garden. These plants are hardy in Southern Ontario.**



### **Arneson Gem**

(C. B. Van Nes x Koster's Brilliant Red) x unknown

Deciduous Azalea, Early Midseason to Midseason

3 ft in 10 years 2 gal





### **Arneson Gem**

(C. B. Van Nes x Koster's Brilliant Red) x unknown  
Deciduous Azalea, Early Midseason to Midseason  
3 ft in 10 years 2 gal



## **Arneson's Ruby**

Deciduous Azalea

A stunning plant with strong red, wavy-edged flowers in ball-shaped trusses that are produced in abundance in midseason. A vigorous grower with an upright habit.

2 gal



Rhododendron 'Weston's Innocence' (Mezitt)



### Weston's Innocence

A superior hybrid of arborescens x viscosum

Late June early summer flowering. A vigorous-growing compact plant with upright branches, becomes mound-shaped with age. Heavy flowering with strongly scented small white blossoms. Foliage is twisted, slightly glossy, and has a bronze cast in summer. Little susceptibility to mildew. Burgundy-red fall foliage, often with yellow ribs.

2 gal



### Weston's lemon Drop

1975 selection from a block of 1963 hybrids (viscosum x Unknown)

Summer flowering. Vigorous with stiff upright branches topped with peach buds and pale yellow flowers in mid July with slight lemony fragrance. Holds up well in hot sun, often for 2 weeks or more. Foliage is small, curled downward, a dusty blue-green color in summer. Leaves change to dark pink-red on exterior branches and to yellow on interior branches in fall. Resistant to mildew. Winter stems are a distinctive red-brown. Very hardy.

2 gal



## Lollipop

[(viscosum x cumberlandense) x arborescens]

Extremely fragrant pink flowers with a light pink and yellow flare in mid June. By late June mature flowers are silvery pink and continue to give a moderately heavy, sweet, lingering fragrance to the garden. Autumn color begins in early September and continues with red-orange tones through October. We have experienced no leaf mildew problems. 2 gal





**MANDARIN LIGHTS** – A deciduous azalea of the Northern Light series developed by Harold Pellet at the University of Minnesota. Probably the best performing of the Northern light series. Requires very bright light to full sun. These plants lose their leaves in the winter after providing a fine display of foliage colour. In the spring or in the pot, when they are first obtained, they appear to be long sticks with buds. These plants are hardy to -30F. 2 gal



### **Northern Hi-Lights Azalea**

Hybrid of an Exbury seedling and an unidentified azalea seedling. The flowers are creamy white with a bright yellow upper petal and have a cold hardiness rating of -30 degrees F. Plants grow relatively slowly to four feet high and four to five feet wide. The dark green foliage has some resistance to mildew. 2 gal



**Northern Hi-Lites**





### Weston's Popsicle

Wonderfully fragrant, dark pink flowers with an orange flare open in early summer, well after most other azaleas are done. Burgundy fall color. 2 gal



Rhododendron 'Popsicle' (Mezitt)



Salem, NH

S & J Perkins

## Weston's Popsicle

Wonderfully fragrant, dark pink flowers with an orange flare open in early summer, well after most other azaleas are done. Burgundy fall color. 2 gal



### Northern White lights

prinophyllum x unknown white Exbury

Very floriferous; trusses of four or five funnels possess an excellent clove scent; ten-year height of five or six feet; Flowers precede the leaves & are still present when the leaves are in. Autumn colors tend toward purples. Likes full sun to partial sunlight, persistent moisture in well drained soil is best; wilting leaves bounce back immediately when watered. 2 gal

## **Lepidote Rhododendrons**

**Rhododendron are divided into two categories:  
lepidote and elepidote.**

**The lepidote rhododendrons have minute scales  
on the leaves and are generally the small-leaved  
species. (*See the earlier page on Evergreen Azaleas  
for a short discussion of “minute scales”.*)**

**Conversely, the elepidote rhododendrons don't  
have leaf scales and are generally the large-leaved  
species.**





**AGLO** - Bright pink, splash of red in the throat, aromatic bright green foliage turns mahogany in winter, often has shades of red and yellow in fall. Requires good drainage. Blooms a week or more after PJM in spring. Medium growth rate. 3-5 ft x 3-5 ft wide. Full sun to partial shade. Hardy to -25F. 2 gal

Rhododendron 'April Mist' (Mehlquist)



## **April Mist**

(minus Carolinianum Group x mucronulatum 'Cornell Pink') x dauricum,  
white form, selfed.

Early season. 1 m (3 ft) after 10 yrs. 2 gal





**April Mist Plant Habit**

**2 gal**



Photo by Boland



Rarefind Nursery

## Bubblegum

Chemically induced tetraploid of 'Weston's Aglo'.

Single, pink flowers with small foliage and showy red stems. An offspring of R. 'Weston's Aglo' which is a P.J.M.-type rhododendron with larger and make a better show against the larger foliage. 2 gal





Fall colour Cornell Pink foliage

**CORNELL PINK - Rh. Macronulatum Cornel Pink.** A blaze of wonderful eye catching pink in the early garden. The color is a pure phlox pink without any trace of lavender. It opens deep pink and matures to a soft, pale pink. Blooms at about the same time as PJM and in some cases a week earlier. In St.Catharines 4 ft tall x 3 ft wide after 20 years. Prefers well watered conditions with sharp drainage. The pinky lavender blooms of Rhododendron Macronulatum make an excellent compliment to the earliest of spring blooming bulbs, especially deep blues like Scilla siberica and Chionodoxa (glory of the snow), as well as yellows like Aconite and Narcissus February Gold. The leaves are small and they turn shades of red and yellow in the fall. However the plant is totally deciduous. In the spring, when in full bloom, Cornell Pink is totally leafless, giving a nice airy effect and showing the blossoms to maximum effect. This variety is very rarely available. Does not perform well if allowed to dry out .

3 gal

# **The PJM Group of Lepidotes**

***Rhododendron* 'P.J.M.'** is not a single cultivar, but rather a group of hybrids that were derived from a cross of *R. carolinianum* and *R. dauricum* var. *sempervirens* performed at Weston Nurseries in Massachusetts in 1939.

Though the resulting seedlings have been relatively uniform, variability does exist in terms of plant habit, foliage color, flower color, bloom time and growth rate. They all have a pleasant bronze colour in winter.

Harold Greer in his stunning **Greer's Handbook to Available Rhododendrons** lists 7 different varieties beginning with the phrase PJM: Among these are 'Elite', 'P.J.M. Compact Form', 'Regal', 'Victor'. They vary in depth of colour, compactness, ultimate size, and time of first bloom.

**These 'P.J.M.'** hybrid cultivars are vegetatively propagated to assure uniformity.

The P.J.M collection is among the hardiest, easiest to grow and most reliable of evergreen rhododendrons.

P.J.M. varieties grown in full sun tend to be more compact and shorter in ultimate height. P.J.M. cultivars are often grown as hedges and are shorn to achieve bushy plants.



Rhododendron 'Checkmate' (Mezitt)



### Checkmate

Tissue culture from PJM Victor. Lepidote. 2' x 2'. Masses of small, lavender-pink flowers bury this dwarf PJM-type rhododendron in early spring. This is the most compact form of PJM commercially available. Dark mahogany winter foliage. Checkmate rhododendrons have beautiful dark, mahogany winter foliage. Most dwarf of all the PJM plants. 2 gal



## Mezitt's PJM Compact

A photograph of this cultivar is not available. Harold Greer in his *Greer's Guidebook to Available Rhododendrons*, 3<sup>rd</sup> Edition, compares Compact to Checkmate as "the same cheery flowers on a more compact growing habit". The photos to the right show the bright cheerfulness of this group of cultivars.



Photo by M.Yarmoshuk



Rhododendron 'Midnight Ruby' (Mezitt)



Weston, MA

S & J Perkins

MIDNIGHT RUBY - A Mezitt, Weston Nursery introduction ('Olga' x PJM Group). Red-purple, yellowish eye. Compact growing; almost black-bronze winter foliage. Compact upright habit. Early season bloom. 2 ft tall x 3 ft wide. Does well in full sun to partial shade. Hardy to -25F. 3 gal

# **Elepidote - Large Leafed -** **Rhododendrons**

**"Big Leaf" rhododendrons. These are what most people first think of when they hear the word rhododendron. "Elepidote" literally means "without scales," referring to a characteristic of the familiar large leaf rhododendrons.**

*(See earlier material in this presentation on Evergreen Azaleas.)*

**Foliage of this class of rhododendrons, although generally larger in size, can vary from about an inch long as in the species *R. proteoides* to as much as three feet long in the species *R. sinogrande*.**

**Some have incredible fuzzy indumentum on the new growth and under the leaves, as on *R. yakushimanum*. (See next slide.) The flowers can be almost any color.**

**This group includes a very large number of hybrids.**



# Indumentum - Tomentum

The fuzzy material on the surface of the leaf, tomentum, is not mildew & is normal for most cultivars with *yakushmanum* in the parentage. This wears-off during the summer's growth. The fuzz on the underside, indumentum, also normal for plants with this parentage, is permanent.





CUNNINGHAM'S WHITE - caucasicum x ponticum, white flowers with greenish yellow blotch. Buds flushed with pink. Dark green foliage. Mid season. 3- ft tall x 4 ft wide. Prefer some shade, but require bright light to bloom well. Hardy to -25F. 2 gal





**CUNNINGHAM'S WHITE** - caucasicum x ponticum, white flowers with greenish yellow blotch. Buds flushed with pink. Dark green foliage. Mid season. 3- ft tall x 4 ft wide. Prefer some shade, but require bright light to bloom well. Hardy to -25F. 2 gal

**Cunningham's White**



**Cunningham's White – Plant habit  
4 ft after 10 years. Late midseason  
2 gal**



## Hong Kong *catawbiense* var *album* x *Crest*

Midseason bloom. 5 feet after 10 years. Held in flat trusses of 13. Bred for cold hardiness, this tall, offers an upright, well-branched habit and flat, glossy yellow-green leaves. Pale yellow flowers appear in late spring, each one with a bright greenish-yellow blotch in its throat. Grow the plant in moist but well-drained leafy, humus-rich acidic soil and partial shade. In hot areas, 'Hong Kong' can be susceptible to leaf dieback.





Hong Kong

**catawbiense var album**

**x**

**Crest**

2 gal



**FANTASTICA** - A Hachman hybrid, a new "good doer" is a prolific bloomer . Its flowers appear in late May and are deep rose fading to white in the throat, accented by light citron-green spots. It has long, elliptic leaves with a white-wooly indumentum beneath. Bicolor rhododendrons have a contrasting color along the edge of each petal—either a thin "picotee" edge or a gradual shading. This two-tone coloration adds drama and texture to the garden. Blooms mid May. 3-4 ft tall x 3-4 ft wide. hardy to -15F. 2 gal





## **Fantastica**

Mars x degronianum ssp yakushimanum 'Koichiro Wada'.

Midseason to Late Midseason. Flower deep purplish-pink, shading to white in throat, light spotting of grayish greenish-yellow. Very large trusses of about 20 flowers. Leaves elliptic, dark green with woolly, tan-coloured indumentum. Dense and compact shrub.

2 gal

Rhododendron 'Fantastica' (Hachmann)



FANTASTICA – A Hachman hybrid. Its flowers appear in late May and are deep rose fading to white in the throat, accented by light citron-green spots. It has long, elliptic leaves with a white-wooly indumentum beneath. Bicolor rhododendrons have a contrasting color along the edge of each petal—either a thin “picotee” edge or a gradual shading. This two-tone coloration adds drama and texture to the garden. Blooms mid May. 3-4 ft tall x 3-4 ft wide. hardy to -15F. 2 gal



**FANTASTICA** - Hachman, a plant breeder in Germany, has been described as probably the world's best rhododendron hybridizer. This consistently reliable cultivar, relatively new to North America, is a prolific bloomer. It performs well in the harsh climate of southern New Hampshire. 2 gal



Rhododendron 'Ingrid Mehlquist' (Mehlquist)



**INGRID MEHLQUIST** - An exceptional Yak hybrid developed by Gus Mehlquist of the University of Connecticut. In late midseason (later than most other Yaks), clusters of large pink buds open to ball-shaped trusses containing 20 or more pure white blooms. Just as attractive is the foliage, which is deep green and convex, with light indumentum below. Compact, well-branched habit. Very floriferous at a young age. 2' x 3'. **HARDY TO -25F** 2 gal

**Rhododendron 'Ingrid Mehlquist' (Mehlquist)**



Ashford, CT

S & J Perkins

**Ingrid Mehlquist – Young plant habit – blooms at an early age.**

**2 gal**





Rhododendron 'Nova Zembla' (Koster)

Salem, NH

S & J Perkins

### Nova Zembla

Parsons Grandiflorum x hardy red hybrid

Midseason bloom. A long time favourite. Reliably Hardy. 5 ft after 10 yrs.

2 gal



**Nova Zembla (Plant Habit)**

Parsons Grandiflorum x hardy red hybrid

Midseason bloom. A long time favourite. Reliably Hardy. 5 ft after 10 yrs  
2 gal



## Purple Passion

['Purple Splendour' X 'Catalpa']

Deep rich purple flowers yellow stamens in mid-season and dark green, very disease resistant foliage. Introduced from cold Johnstown, PA, where winter temperatures regularly reach  $-20^{\circ}\text{F}$ . Outstanding variety has trusses with a white flare on the upper lobe, leaves are deep green, habit is vase-shaped. 2 gal





## **University of Helsinki Haaga**

***brachycarpum* ssp *tigerstedtii* x Doctor H.C. Dresselhuys**

**Very hardy. An upright grower reaching 150 cm tall with attractive, dark green, coarse foliage. A late bloomer with stunning bright pink flowers**

**Marked with red-orange freckles. Does best in full sun to partial shade; requires an evenly moist well-drained soil for optimal growth, but will die in standing water.**

**A low maintenance shrub, and should only be pruned after flowering to avoid removing any of the current season's flowers. It has no significant negative characteristics. 2 gal**



**VERNUS** - A Shammarello / Leach hybrid is probably the first large-leaved rhododendron to flower in the spring, and it's a beauty with star-shaped shell pink flowers, each with a dark red blotch. Plants are sun tolerant, vigorous, and cold hardy. Upright open habit. 5' x 5' after 20 years. Hardy to -25F. 2 gal





**VERNUS - Plant habit**    2 gal

**Cultivars Provided  
by**

# **Nettlecreek Nursery Fonthill, Ontario**

**Prices are shown on description of each cultivar**

*Rhododendron dauricum* 'Arctic Pearl' (Baldsiefen)



### Arctic Pearl

(form of *R. dauricum*) elepidote, Baldsiefen selection

White flowers adorn this cute small leaved upright plant in early to mid April. A lovely sight with Cornell Pink and other dauricum. **4' after 10 years.** \_Hardy to -25F (-32C) Price \$15





APRIL ROSE - [(minus) X (dauricum-Var. Album)]X [(mucronulatum-Var. Cornell Pink) X (dauricum)] lepidote. Rose shaped deep purple flowers are compact and unique looking. Truly a "MUST HAVE". April to early May blooming. Regardless of climate, everyone wants this when in bloom. Deep green glossy foliage. Compact, and bushy plant habit. Best of the "April" series. Plant in sun or shade. Hardy (-25F. to -20F.)

Price \$15





**APRIL ROSE - [(minus) X (dauricum-Var. Album)]X [(mucronulatum-Var. Cornell Pink) X (dauricum)] lepidote. Rose shaped deep purple flowers are compact and unique looking. Truly a "MUST HAVE". April to early May blooming. Regardless of climate, everyone wants this when in bloom. Deep green glossy foliage. Compact, and bushy plant habit. Best of the "April" series. Plant in sun or shade. Hardy (-25F. to -20F.) Price \$15**





## APRIL SONG

[(unnamed double from PJM Group x mucronulatum) x dauricum var album] x (Pioneer x unnamed hybrid form PJM Group).

Large, purplish pink flowers have nearly white inner, 2" across, hose-in-hose, fused stamens form ring of contrasting lighter pink color. Ball-shaped truss with 10 flowers. Early midseason blooming, upright, dense, wide-growing shrub. Not prone to root rot. Price \$15

**Rhododendron 'April Song' (Mezitt)**



Acton, MA

S & J Perkins

### **APRIL SONG**

[(unnamed double from PJM Group x mucronulatum) x dauricum var album] x (Pioneer x unnamed hybrid form PJM Group). **Price \$15**





**CHECKMATE** - A compact form of the famous PJM grows much more compactly, requires a minimum of maintenance and is well suited for the smaller garden. lavender pink flowers with dark mahogany winter foliage. Blooms cover the plant in early spring. 2 ft tall x 2 ft wide. Hardy -20F to -25F. Very suitable for the small garden. *Price \$15*



## Cherry Cheesecake

Cherry Cheesecake is an improved form of Hachmann's Charmant Rhododendron. Flowers are white with red edges and a red blotch. Large lush mounding foliage on this shrub. There is not much information available from the cognoscenti inhabiting the rhodochat line. Price \$12







**Hachman's Charmant grown in Denmark**

**Price \$12**





### Hot Dawn

'Mars' x [R. yakushimanum exbury for x 'Mars']

A Brueckner Hybrid. Vivid purplish red flowers, with frilly edges and lots of substance, are set off by excellent dark green foliage in late midseason. Blooms consistently as a young plant, making it a good choice for growers. Upright habit. 4' x 4'. Price \$12

## **Rhododendron mucronulatum var. album**



**Salem, NH**

**S & J Perkins**

White form of mucronulatum. This specie is among the first to bloom in any area. It is a splendid addition to accompany other early blooming forms such as Cornell Pink.

Price \$12





**Rhododendron mucronulatum var. album**



Salem, NH

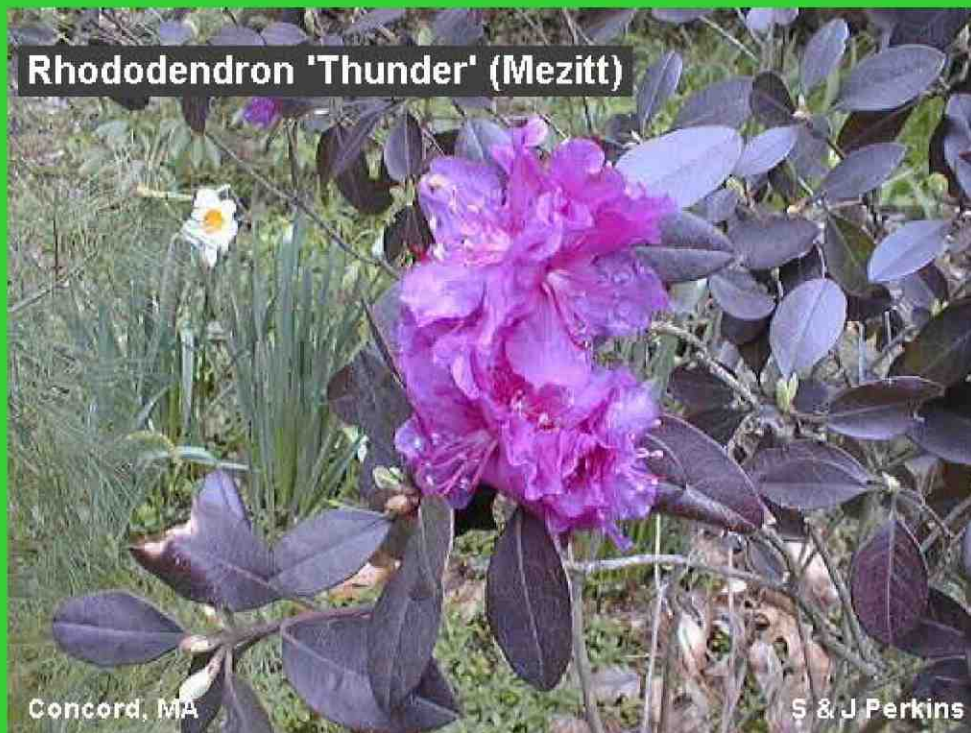
S & J Perkins

White form of mucronulatum. This specie is among the first to bloom in any area. It is a splendid addition to accompany other early blooming forms such as Cornell Pink. All mucronulatum provide a very open feeling in the garden and are a special treat because they bloom so early.

Price \$12



## Rhododendron 'Thunder' (Mezitt)



Concord, MA

S & J Perkins

### Thunder

Weston Nurseries introduction. Deep purplish red blossoms are produced in early midseason on this floriferous PJM seedling. Foliage is small and glossy and turns a dark mahogany in winter. Cold hardy but also very heat tolerant. Dense habit. Lepidote. 3' x 3' after 10 years. Price \$12

Rhododendron 'Thunder' (Mezitt)



Rhododendron 'Thunder' (winter color)



Wester, MA

© 2004 Perkins

S & J Perkins

**P4M**

***2009 Plants for  
Members***

**Preliminary List**



# ***2009 Plants for Members (P4M's)***

The cultivars listed in this file are available exclusively to members of the Niagara Chapter of the Rhododendron Society of Canada.

These cultivars will be available at the General Plant Sale on April 25 at 10 a.m. at the Vineland Innovation and Research Centre.

The price to members is \$12 per plant. The usual 10% discount applied to plants listed in the preceding General Sales listing does not apply to these plants.

These P4M plants, offered at \$12 each , have been grown-on by volunteers for two years. The price to members serves to recover costs associated with propagation, phyto-sanitary certificates, cost of shipping from the plant propagator and incidental costs associated with obtaining the cuttings, rooting them & growing-on for two years.





### Rh. Adenopodium

See following page for full description.  
Additional images follow description.

## Rh. adenopodium

An elepidote species native to E. Sichuan and Hubei provinces of China, growing in rocky woods at elevations of 5000-7000 feet.

Plant habit is spreading, broader than tall, reaching 4-10 ft (1-3 m) high. Young shoots and leaves are densely tomentose with whitish or fawn tomentum. The leaf tomentum disappears with maturity but the underside of the leathery leaves is covered in thick felty or woolly indumentum. The whitish, fawn, or brown indumentum is formed by two layers of hairs and short stalked glands. The long narrow leaves are up to 7 inches long and only 1 to 2 inches wide.

Because of its heat tolerance, it seems to be offered by more nurseries in the South.



Photo by H. Eiberg

**Rh. Adenopodum**



**GIGI**

Photo by MGY



**Gigi in Yarmoshuk  
Garden, St. Catharines**



**GIGI** Dexter hybrid.  
Unknown parentage.  
Red flower open funnel-shaped wavy lobes 3 ¼ inch across, vivid purplish red with deep red spotting. Ball shaped truss of 15-18 flowers. Late season mid season bloom. 5 feet high after 10 years. Hardy to -21°C. Broad dense habit, prefers a shady location. Grown in Yarmoshuk garden since 1980.

Shown here, 8 ft tall, after almost 30 years in shaded north exposure with evergreen azalea "Cascade".





**Plant labeled “Ilam Violet” but  
is believed to be “Mood indigo”**

**Plant in photo is 20 years old  
growing in Yarmoshuk’s garden  
In St. Catharines.**



# Mood Indigo aka Ilam Violet

This plant was obtained at a Niagara Region plant sale in the late 1970's.

It has grown in Yarmoshuk's garden for about 20 years and is now about 5 feet tall and 2-3 feet wide.

It grows in full sun, planted in very organic soil comprised of coarse peat moss, grow bark and compost.

It has an upright narrow growth habit, slightly open to reveal its limb structure. It is slow-growing. It adds limbs or size very slowly.

In the Spring of 2007, it's leave were badly damaged during the spring bright sun and very cold nights. Yet is was thoroughly bud hardy and provided a good show of blooms against a brown background. By Fall the leaves had fully recovered and it has produced excellent bud set for 2008.

**Ilam Violet**



Photo by N. Yarmoshuk



## Koromo Shikabu

**This is a very hardy evergreen azalea that has grown in the Yarmoshuk's Garden for more than 20 years. It is now 2 feet tall by about one foot wide. It has produced flowers each year. It stands out against any yellow azalea that blooms at the same time. Rarely, if ever, seen in the local trade.**



Koromo Shikabu



**Azalea Koromo Shikibu**  
(blue petals in center right of photo) with (yellow) azalea Luteum





**Azalea Koromo Shikibu with Azalea Cascade (left) & Azalea Luteum (right)**

**Marge Hinerman**





**Rh. smirnowii**





**Rhododendron 'Spellbinder' (Leach)**

Sally and John Perkins

**Russell Harmon x Robin Hood**

**Leach hybrid. Pink flower 3 ½ inches across. Ball shaped truss holds 16 flowers. Early bloomer hardy to -26°C. 4 feet tall in 10 years**

## VINEROUGE



**A product of the Vineland HRIO Rhododendron Program  
Registration information and history appear on following page**

## VINEBROOK

Flepidote. *R. smirnowii* x 'Lady Bessborough'. Cross (1961) and raised by Roy Forster; named and described by A.W. Smith, both Horticultural Research Institute of Ontario, Vineland Station, Ontario, Canada; introduced and registered by H.R.I.O. Flowers openly funnel-shaped, 3 1/8" across x 1 9/16" long, 15 per truss, 5-lobed, wavy margins. White flowers with strong purplish red (64B) flares in throat of dorsal lobe, and light spotting of same color extending itself half way up the lobe. Calyx 1/16", medium green. Ball truss, 6~" across x 5 7/8" high. Leaves 5«" x 2", elliptic, acute, cuneate, smooth; under surface has slight felt-like indumentum. Plant tall, upright, spreading, open growth habit, 6«' high x 3~' wide in 25 years from seed. Blooms late May. Plant and bud hardy to at least -16F.



## Special Note

Cultivars being offered this year have characteristics of being cold hardy and heat tolerant. All of these cultivars have been grown in Niagara for at least 2 years and have proven to be hardy and heat tolerant. But they must be treated as any other rhododendron.

## Growing Any Rhododendron

All rhododendrons and azaleas demand continuous oxygen and moisture at the roots as a fundamental requirement.

This requirement is satisfied for these plants when excellent drainage and a cultural mix very heavy in organic material are provided. Growing these plants in a mixture of equal parts COARSE peat moss, composted pine bark and compost provides these conditions. Avoiding drying out of the root ball during drought is an important prerequisite. If coarse peat moss is unavailable use whatever peat moss is available .

# Advance Orders for Members

This year we are continuing an innovation introduced last year to complement the on-the-ground sales at Vineland. Members who wish to guarantee availability of their choice, are invited to send their request with a cheque for the appropriate amount to . . . . .

Lil Haworth, 4 Deer Park Court, Grimsby, ON, L3M 2R2

Your request will be collated and plants will be available for pickup at the sale at 10 a.m. on Saturday, April 25, 2008.